



K-AGRO

K-MECH (PVT) LTD



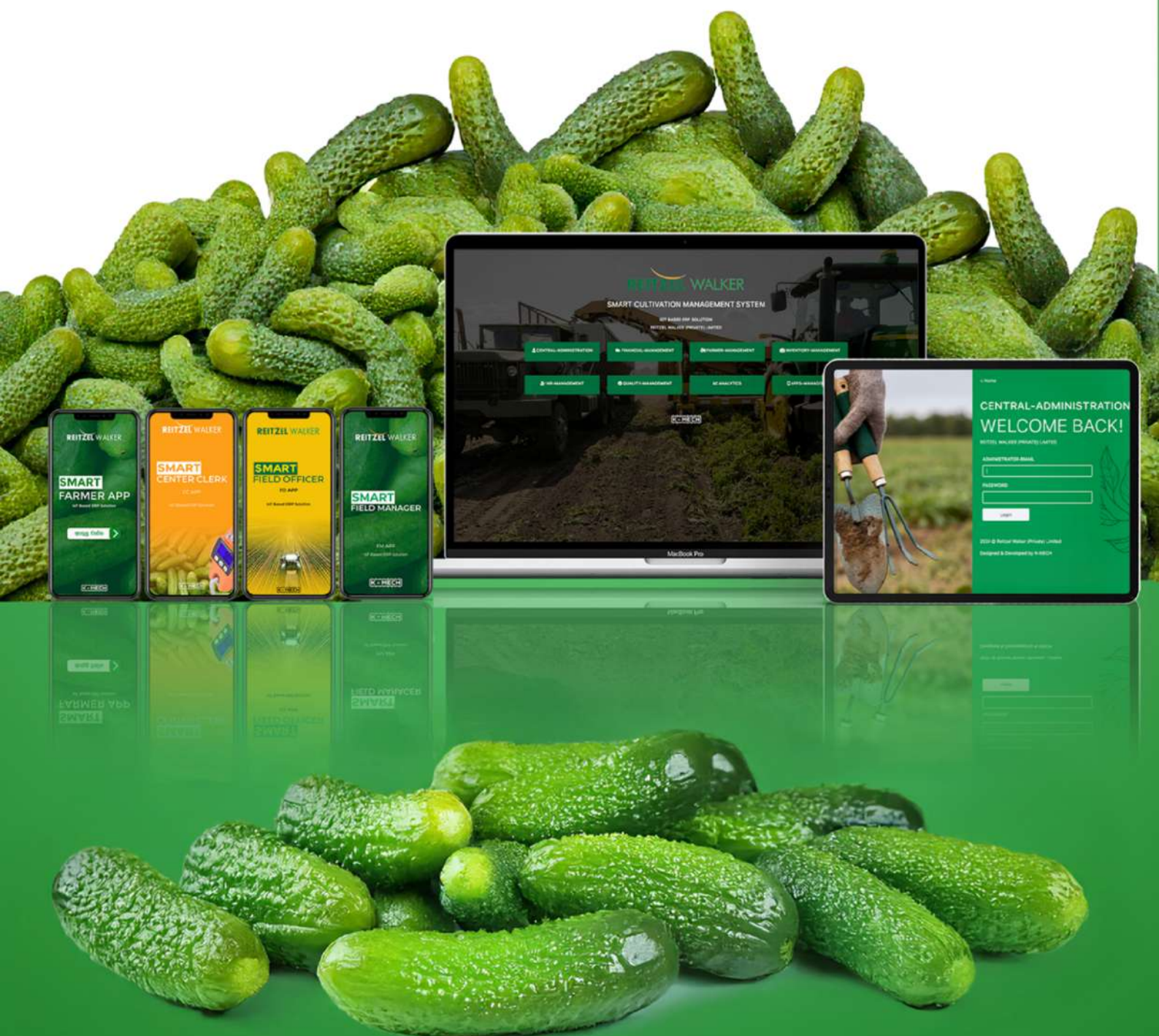
SMART

FARMER PAYMENT SYSTEM

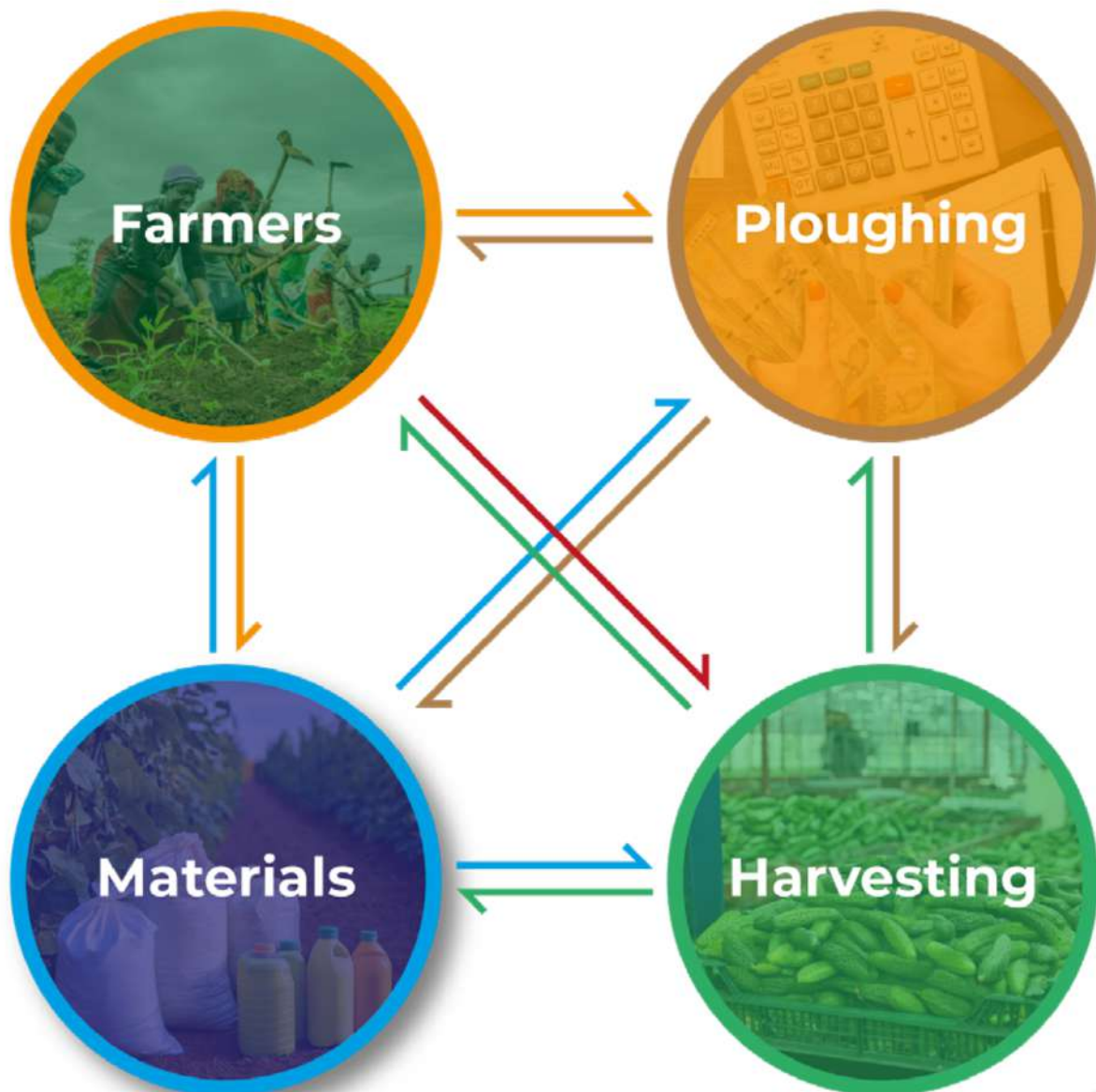


K-AGRO

K-MECH (PVT) LTD



System Core



Designed for Agriculture

Key Features of K-AGRO



Integration

K-AGRO integrates seamlessly with existing agricultural processes and systems, ensuring a smooth transition and effective management of operations.



Registration

Quickly register farmers and stakeholders into the system for streamlined operations.



Ploughing Management

Monitor and manage ploughing activities with precision.



Material Distribution

Track and distribute farming materials with accuracy.



Smart Harvesting

Optimize harvesting processes using real-time data.



Processing Farmer Payments

Efficiently manage and export key agricultural data for further processing and reporting.

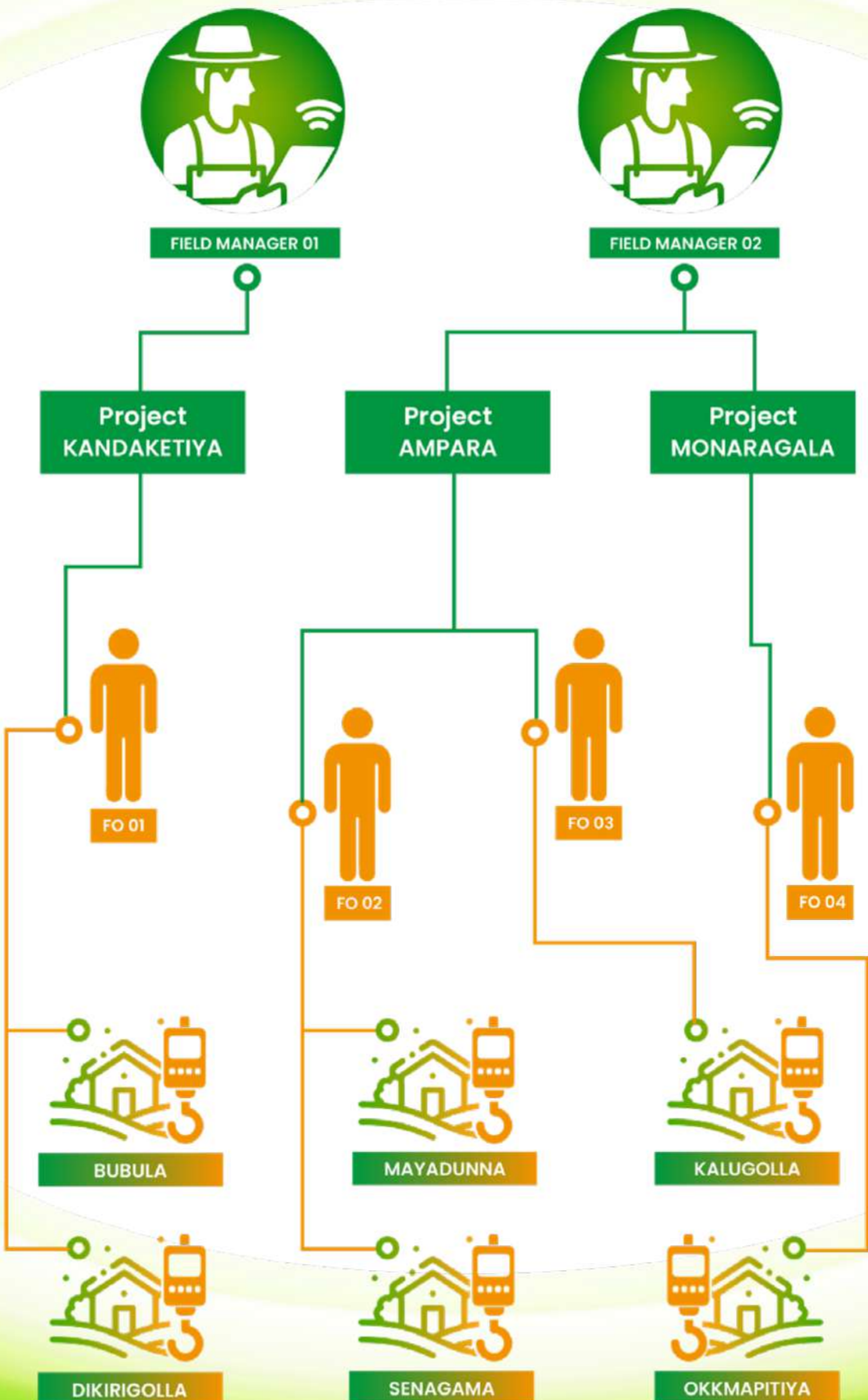


Analytics

Generate comprehensive reports and insights to improve productivity and profitability.

Integration

Project Allocation

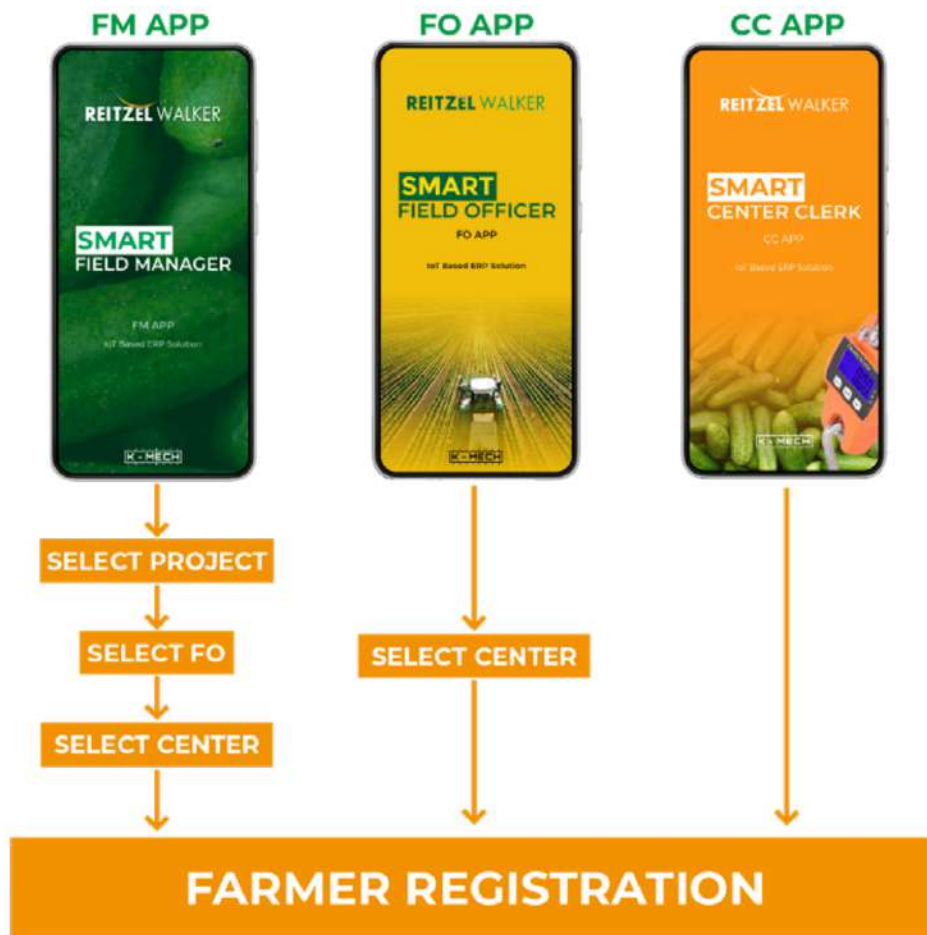


FIELD OFFICERS

CENTERS

Registration

Farmer Registration



Find Farmer



System Generated Smart

Farmer ID

Image Captured By
Field Office App

System generated
QR Code



Farmer Details Section

Saman Perera
995893756
10101010001
AMPARA

Farmer Name

Farmer's NIC Number

Farmer ID (System Generated)

Project Name

Ploughing Management

Ploughing Management



01

SELECT ADVANCE TYPE



02

SCAN FARMER ID



03

FILL BANKING DETAILS
AND AMOUNT



Farmer ID
111103001

Successful Payment for
Land Preparation
Rs. 2,500.00



ADMIN PANEL



Synchronizing
Advance Payment Data



Material Distribution



02

FM APP / FO APP / CC APP
Scan Item ID



03

FM APP / FO APP / CC APP
Issuing Material



Material
ABC Fertilizer 1L



Farmer ID
111103001

Issued 100% (1L)



Notify of Invalid Issuing



03

FM APP / FO APP / CC APP
Re-Scan Issued Item ID

ADMIN PANEL



Synchronizing
Material Issuing
Data By

Offline Process

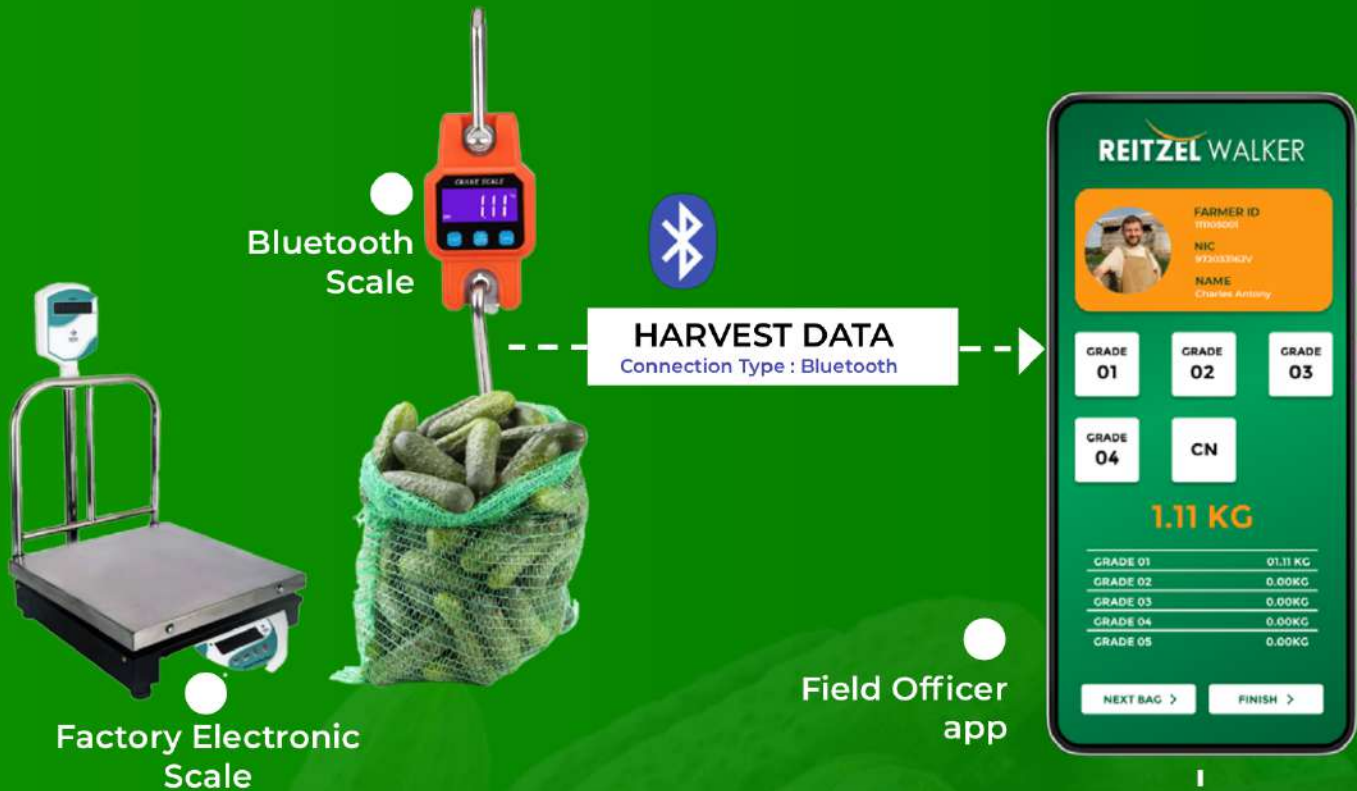
Or

Online Process



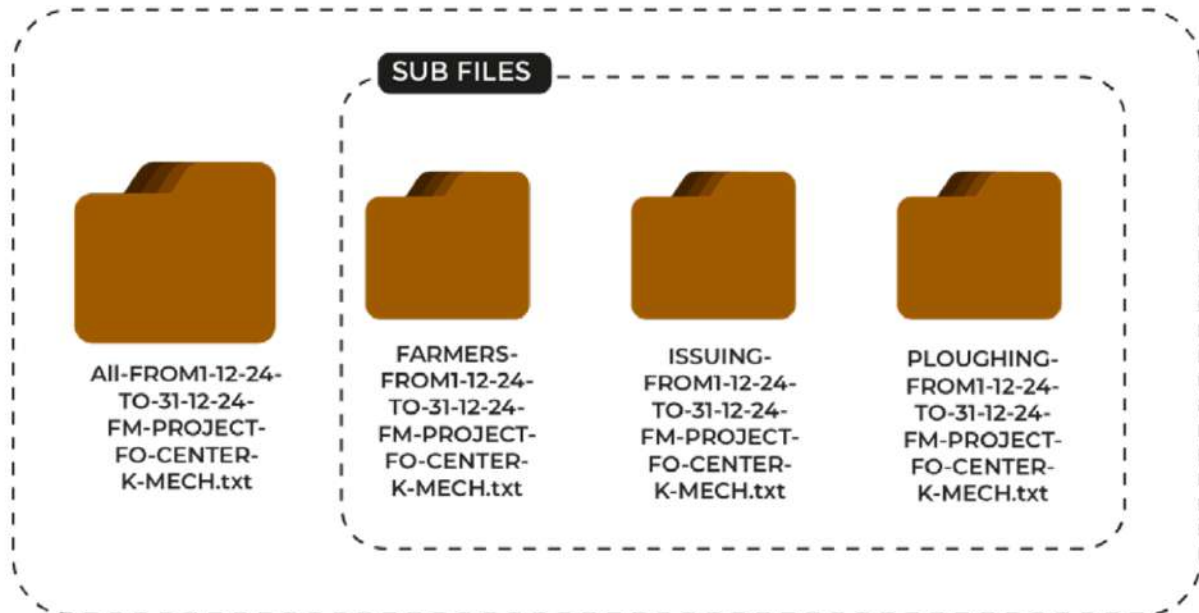
Smart Harvesting

Smart Harvesting

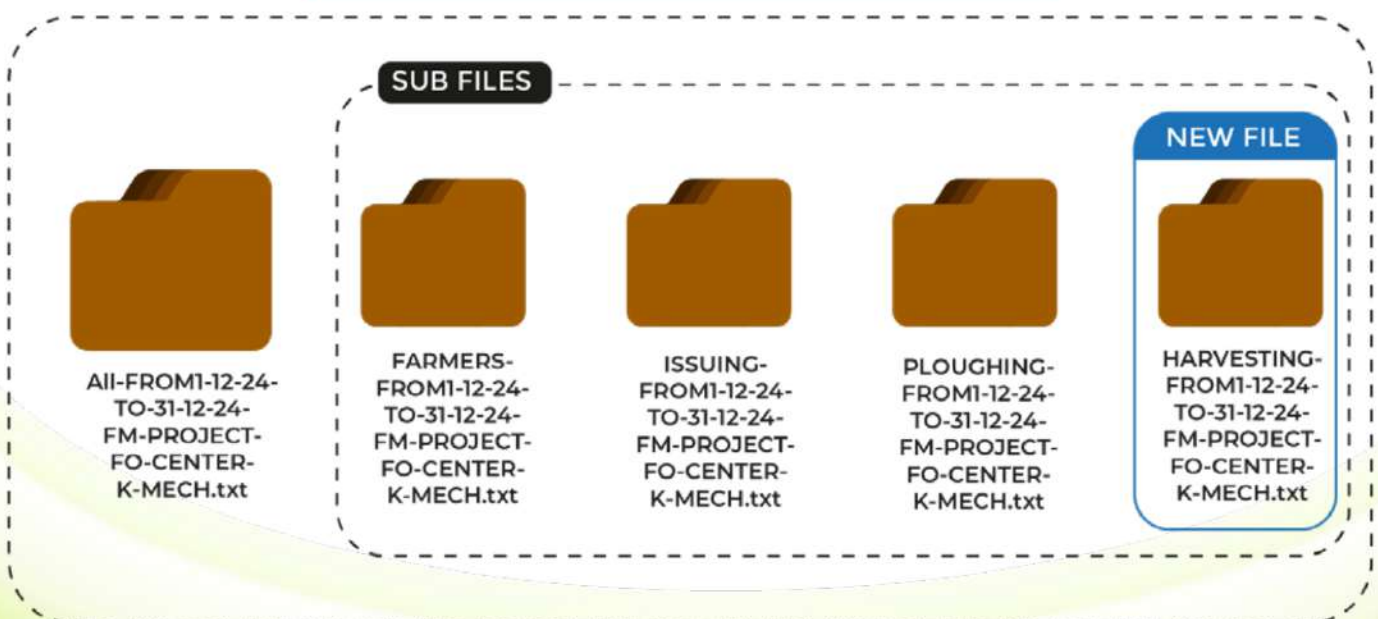


NO DATA DUPLICATIONS

UPLOADING FILE



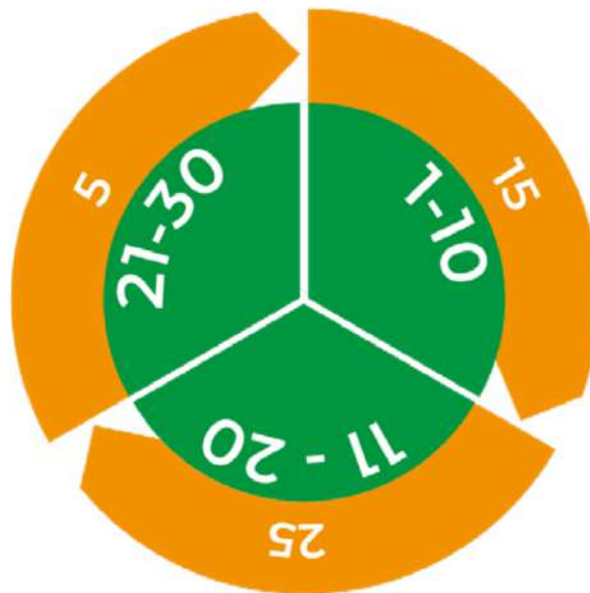
RE-UPLOADING SAME FILE



Processing Farmer Payments

Processing Farmer Payments

HARVESTING AND PAYMENT CYCLE



 Dates of Harvesting

 Payment Dates



FARMER ID
111103001

SMART FARMER APP

REITZEL WALKER

SMART FARMER APP

IoT Based ERP Solution

අපගුලු වන්න



K - MECH



Smart FarmerID



Image Captured By
Field Office App

System generated
QR Code

Farmer Details Section

Saman Perera
995893756
10101010001
AMPARA

Farmer Name

Farmer's NIC Number

Farmer ID (System Generated)

Project Name

Scan Farmer ID



Scan the farmer ID's QR code to enter the Smart Farmer App

App Features

Slide Menu



Home

Posts

Schedule Card

Video Series



Slide Menu

Name & Farmer ID



Daily Schedule



Received Materials



Harvest



Ploughing



Payments

Ploughing Details

FROM	TO	AMOUNT (RS)
2025-01-02	land_preparation	1500
2025-01-02	land_preparation	2600
2025-01-02	land_preparation	1500
2025-01-03	land_cash_advances	1000
2025-01-04	land_preparation	1000

REITZEL WALKER (PRIVATE) LIMITED

Slide Menu > සිසිලේ අත්තිකාරම් (Ploughing)

Material Details

DATE	MATERIAL	QUANTITY	AMOUNT(RS)
2025-01-20	Reitzel-Seeds-1000 nos	1.00	6500.00
2025-01-20	Reitzel-Seeds-1000 nos	1.00	6500.00
2025-01-20	Reitzel-seeds -1000 Nos	0.80	5200.00
2025-01-20	Reitzel-seeds -1000 Nos	0.20	1300.00
2025-01-20	Reitzel -K-Plus 400mt	0.50	420.00

REITZEL WALKER (PRIVATE) LIMITED

Slide Menu > ලැබුණ ද්‍රව්‍ය (Received Materials)

Harvesting Details

DATE	GRADE-1	GRADE-2	GRADE-3	GRADE-4	GRADE-5	TOTAL	G1%	INCOME(RS)
2025-03-06	20.50	11.20	4.90	0.40	0.70	37.70	54.38	6445.50
2025-03-07	15.40	10.90	4.50	0.00	1.50	32.30	47.68	5276.00
2025-03-08	18.70	7.30	5.10	0.60	1.00	32.70	57.19	5494.50
2025-03-09	13.00	5.90	3.30	1.10	1.10	24.40	53.28	3944.00
2025-03-10	21.60	10.80	5.80	1.40	1.80	41.40	52.17	6716.00
2025-03-11								

REITZEL WALKER (PRIVATE) LIMITED

Slide Menu > ලබා දුන් අස්වැන්න (Harvesting)

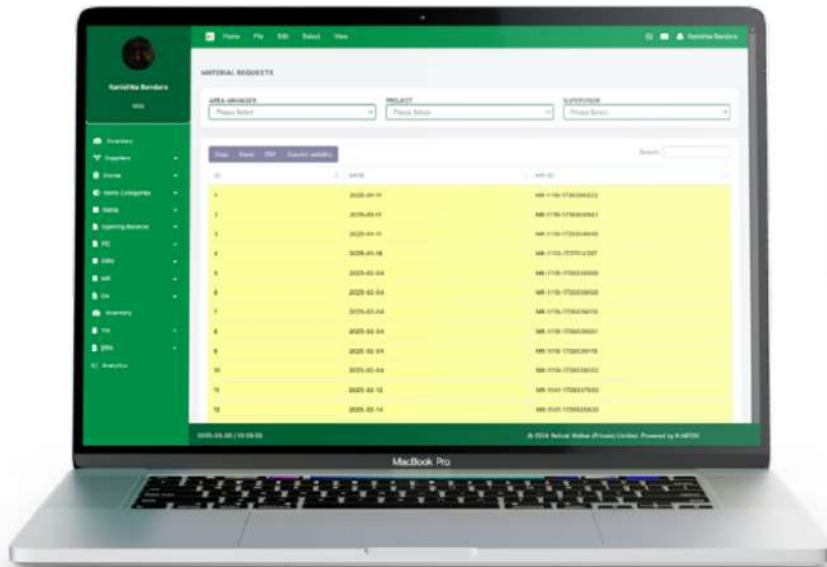
ANALYTICS REPORTS



Inventory Management

Material Requests

Step 1



Check Received
Material Requests

Found Material Request from Ampara Project



PROJECT AMPARA

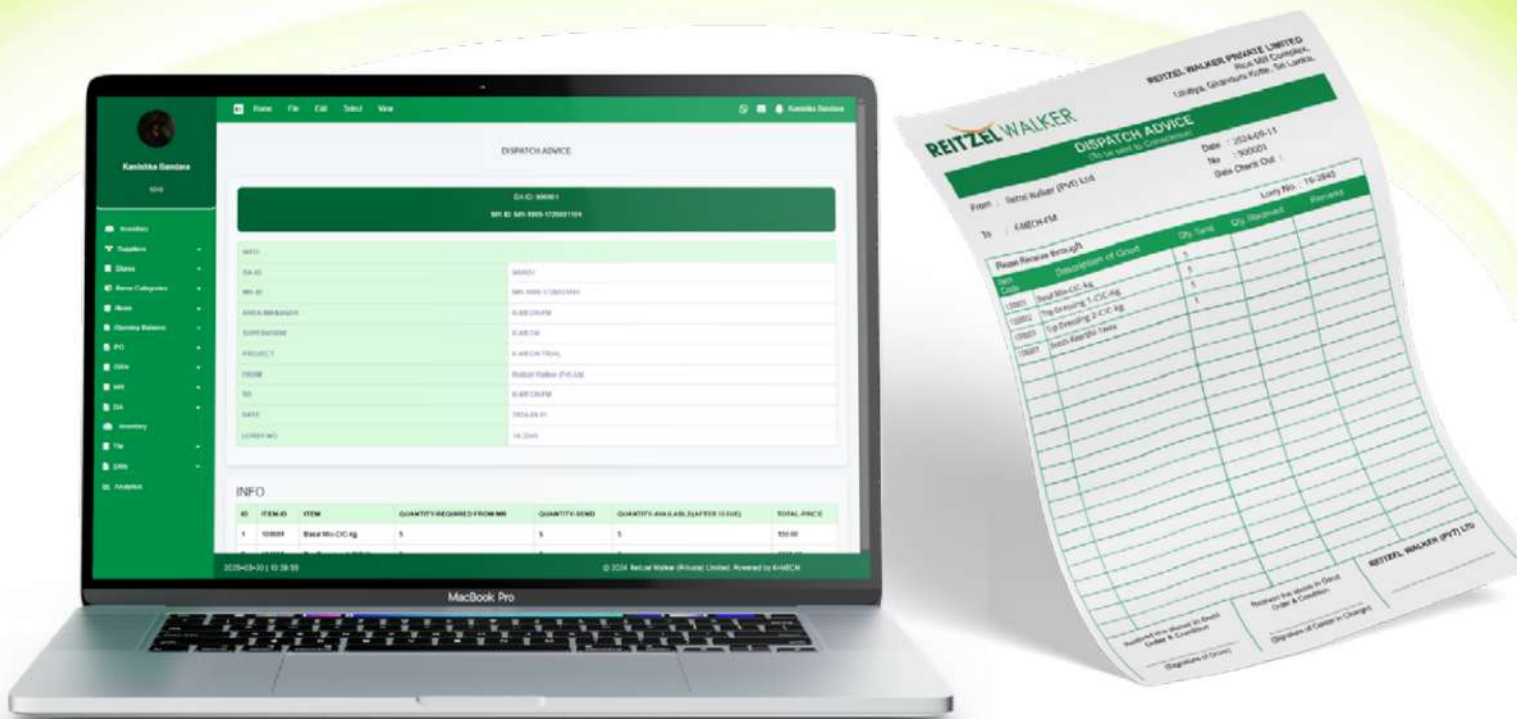


**Material
Requisition**

Item - Fertilizer X10
Quantity - 80 Nos.



Step 2



Create, Print and Approve Dispatch Advice



Quality Management

Quality Management

Step 01



Weighing each farmer's crop,
calculate the total for each
grade of the center.



Grade 1, Grade 2, Grade 3, Grade 4, Grade 5

Center Total
FIELD-WEIGHT

Step 03



**Auto Synchronizing
Field Weight Data**

Step 04



After transportation to the factory...

Step 06



FACTORY-WEIGHT

**Re-Checking
Project Total**